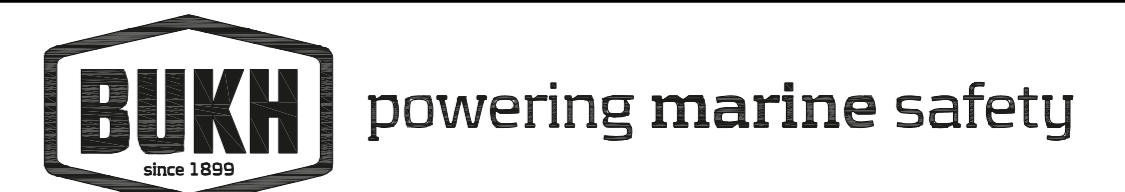
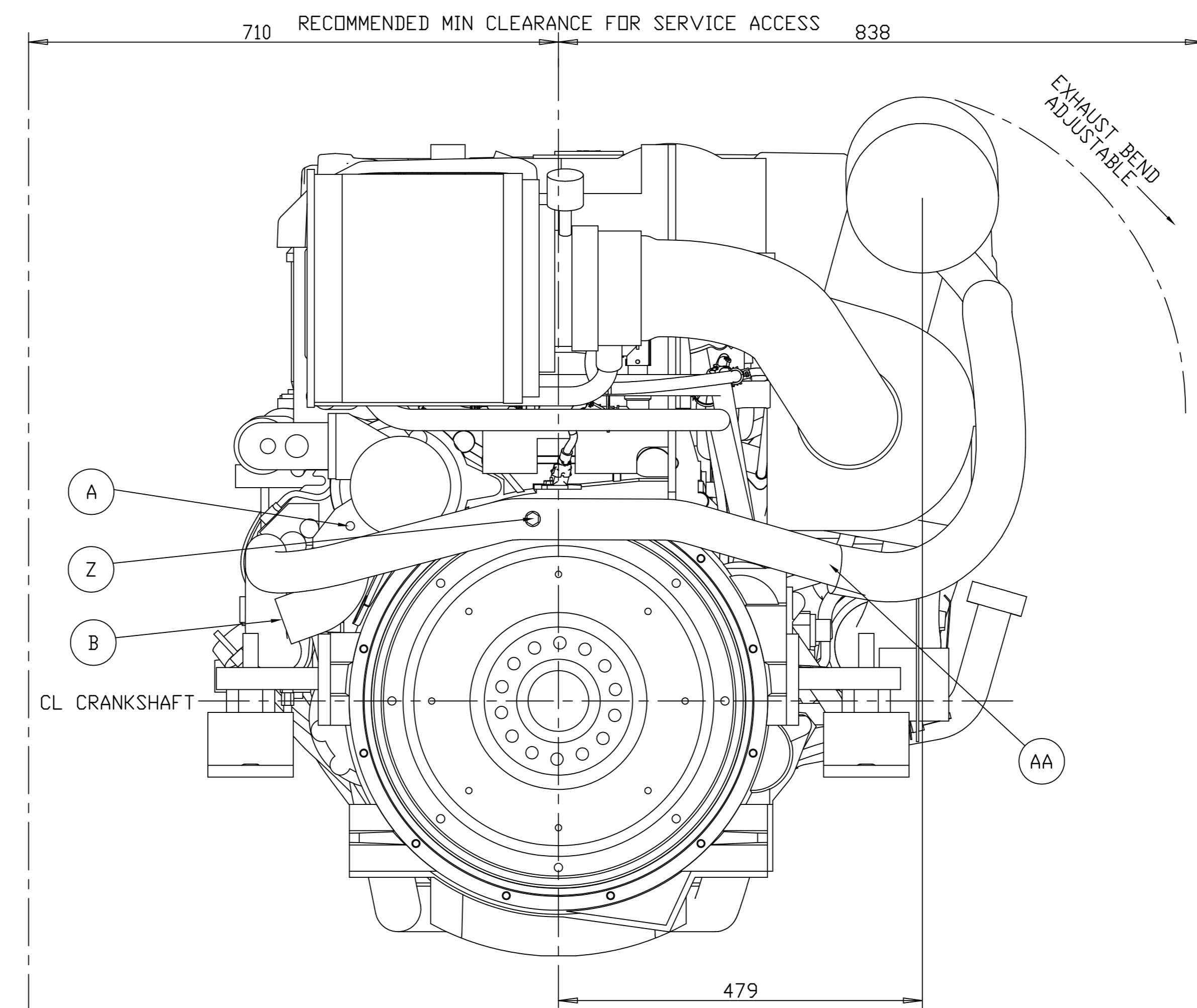
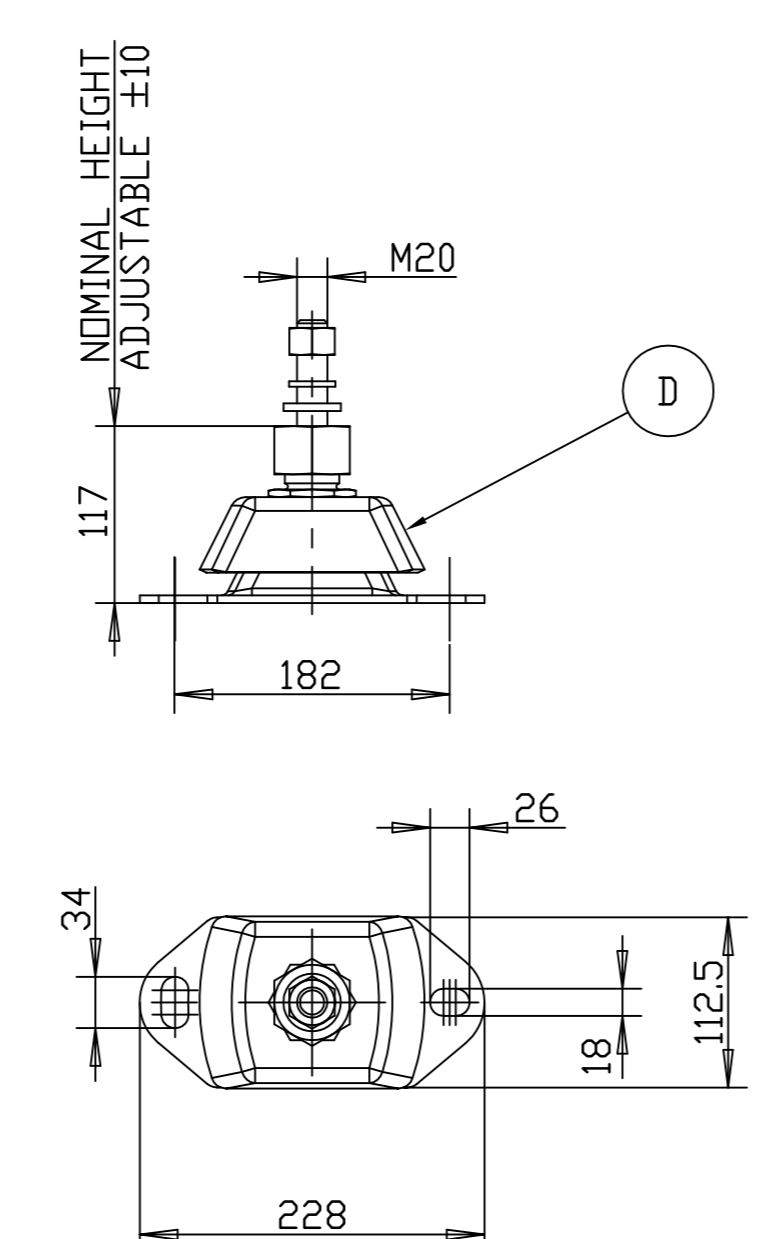
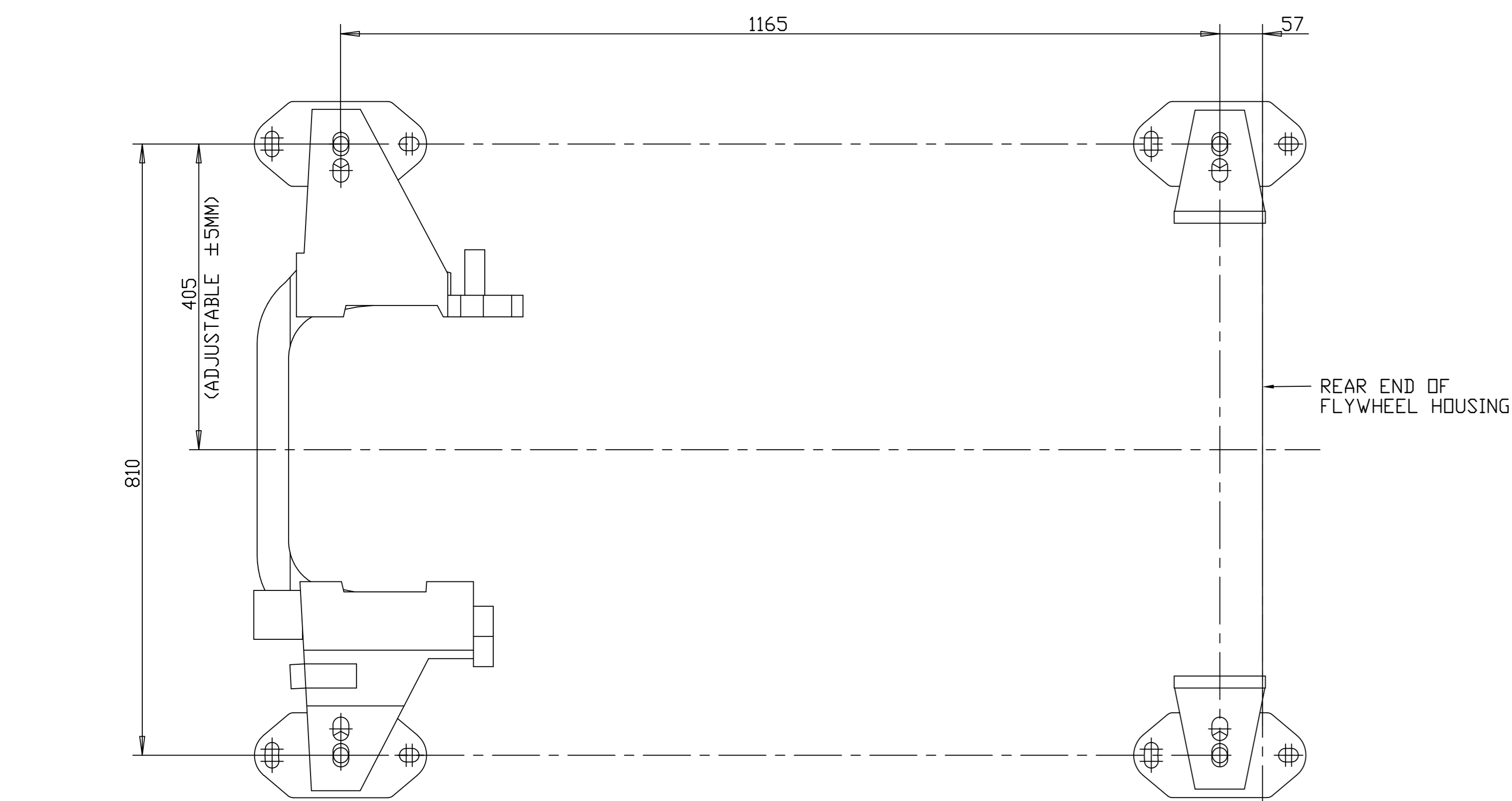


- A SEA WATER DRAIN POINT, 2x
- B SEA WATER INLET, CONNECTION FOR 63 mm (2 1/2") I.D. HOSE
- C1 WET EXHAUST BEND WITH RISER, OPTION1
- C2 EXHAUST FLANGE, OPTION2, MAX LOAD 9KG
- D FLEXIBLE SUSPENSION, STANDARD EQUIPMENT
- E1 OIL DIPSTICK AND FILLING ENGINE STARBOARD SIDE ALTERNATIVE
- E2 OIL DIPSTICK AND FILLING ENGINE PORT SIDE ALTERNATIVE
- F OUTLET FOR OIL BILGE PUMP (M18x1,5)
- G FRESH WATER FILLING (EXPANSION TANK)
- H FRESH WATER DRAIN POINT (3x)
- I OIL FILTER 2x
- J BYPASS OIL FILTER
- K FUEL FILTER/ WATER SEPARATOR
- L PRIMER PUMP
- M FUEL DEAIRATION
- N DIAGNOSIS CONNECTION (6-POLE)
- O CONNECTION SENDERS (6-POLE)
- P DATALINK CONNECTION (6-POLE)
- Q CONNECTION EVC (REVERSE GEAR)(32-POLE)
- R1 CONNECTION BATTERY POS.
- R2 CONNECTION BATTERY NEG.
- S AIR FILTER
- T PRESSURE DROP INDICATOR, AIR FILTER
- U LIFTING EYE, 3x $\varnothing 30$ MIN. FRONT EYE REMOVABLE
- V HOSE CONNECTION HOT WATER OUTLET R1/2" I.D. HOSE, OPTIONAL EQUIPMENT
- W HOSE CONNECTION HOT WATER INLET R1/2" I.D. HOSE, OPTIONAL EQUIPMENT
- X FUEL CONNECTION INLET
- Y FUEL CONNECTION OUTLET
- Z PRESSURE LUBRICATION OF PROP SHAFT (1/4-18NPSF)
- AA SEA WATER OUTLET FOR 2 1/8" I.D. HOSE (O.D. 54mm)
- AB EXTERNAL STOP CONNECTION
- AC CAN2 CONNECTION
- AD AUTOMATIC FUSE, 10A (ENGINE)
- AE STOP BUTTON
- AF AUTOMATIC FUSE, 10A (EVC)

WET WEIGHT 1510KG (WITH OIL AND WATER)
 DRY WEIGHT 1410KG (WITHOUT OIL AND WATER)

This document is the property of BUKH powering marine safety and without BUKH's written consent it is not to be disclosed, reproduced in whole or in part or used for manufacture for anyone other than BUKH.



Diesel engine D13B-B MP Bobtail

Format	Kontr.	Dato	Tegnet	Scale	Tegn. Nr.	Drwg. Nr.
A0		160901	1/2	1:5	009M7600	